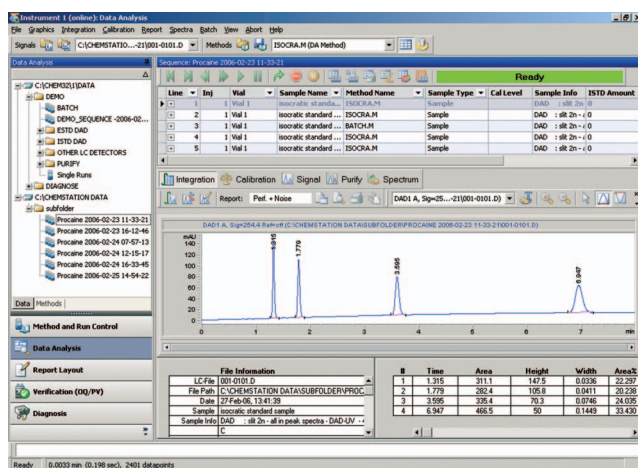


Agilent ChemStation

Feature Overview of Revision B.03.01



New revision boosts laboratory productivity

Agilent ChemStation is the industry leading analytical workstation, handling a wide variety of chromatographic applications, such as GC, LC, LC/MS, CE and CE/MS. It provides sophisticated level-5 control and monitoring of LAN-based Agilent instruments, ensures fast and flexible data acquisition and includes highly efficient data analysis and reporting features.

The latest revision of Agilent ChemStation (B.03.01) includes a whole range of productivity-boosting enhancements and has been specially designed to match the advanced features of the Agilent 1200 Series Rapid Resolution LC system and the Agilent 7890 GC system.

- New user interface design with tree-based navigation provides fast and flexible data handling
- Sequence-based data storage and retrieval functions
- Smooth integration in Agilent OL Enterprise Content Management (ECM) system

New user interface for easy data browsing

The latest revision of Agilent ChemStation provides extensive capabilities for the analysis of large amounts of high-precision data. The enhanced user interface includes a navigation toolbar for easy access to chromatographic data. Context-sensitive menus with right mouse-click functionality facilitate further analysis and an information-at-hand feature enables easy customization of views. The Navigation Table in the Data Analysis view helps users to quickly review all runs acquired during a sequence.



Agilent Technologies

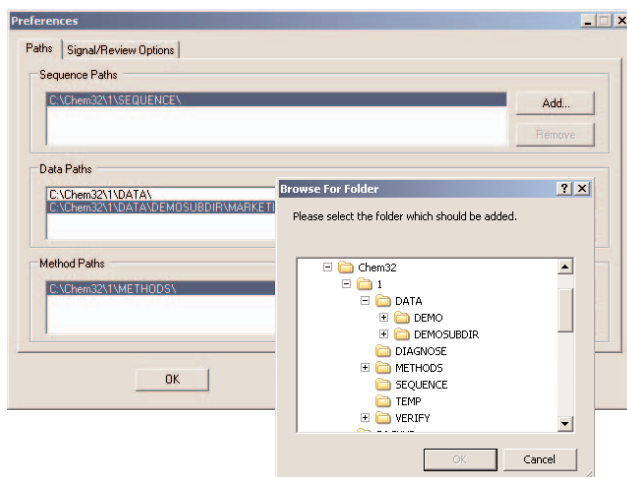
Consistent and secure storage of data, methods and sequences

A new level of advanced data administration provides customizable data storage settings for easy data management, saving data intelligently in a predefined location. Once the storage settings have been defined, the software automatically sets up the corresponding folders and files.

The sequence container:

- Includes all methods used during the sequence (.M)
- Includes batch (.B) and log (.LOG) files
- Includes the original sequence (.S) file
- Includes all data (.D) files and stores the data analysis method (DA.M) with each data file

Save all methods related to a sequence in a predefined location. This helps to retrieve data easily – even years later!

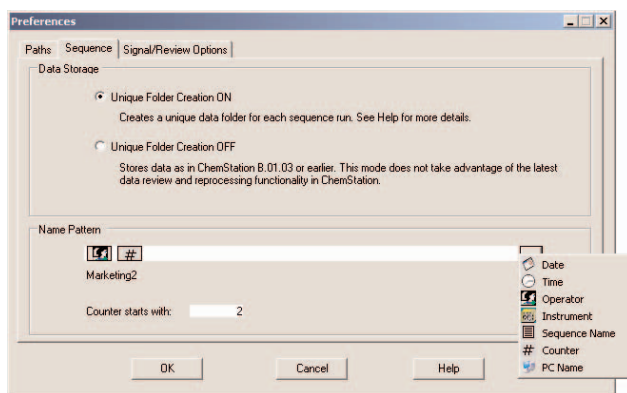


Creation of storage paths for sequences, data and methods enable easy sharing of information.

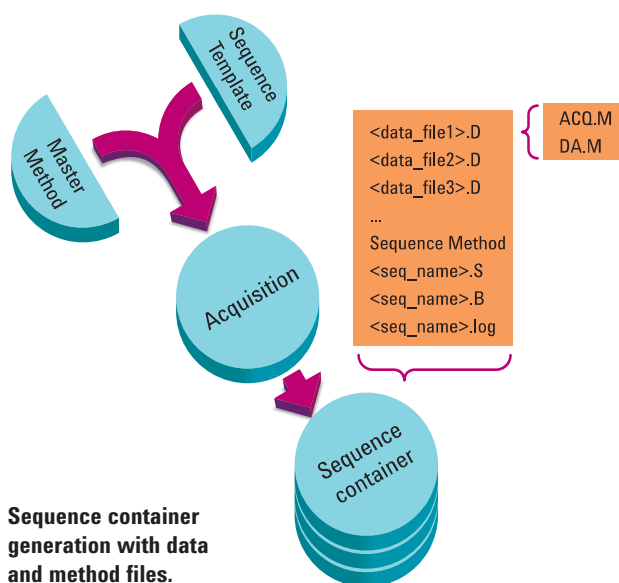
Sequence-based data storage

Master methods and sequence templates enable users to set up and run sequences through Agilent ChemStation's Method and Run Control view. When the option "Unique Folder Creation ON" is selected, sequence data is stored conveniently as a complete file package with a unique name. Each file package contains all raw and meta data associated with the sequence. This new data structure offers users the choice of saving sequence data on a local storage system or in Agilent OL ECM for revision control and secure long-term storage and archival.

Alternatively, the option "Unique Folder Creation OFF" can be selected, which gives users the flexibility to use the storage settings of previous Agilent ChemStation versions and thereby preserve established workflows.



The latest revision of ChemStation creates distinctive sequence folders, which contain all sequence-related information. Customized naming patterns let you use specific identifiers for your data.

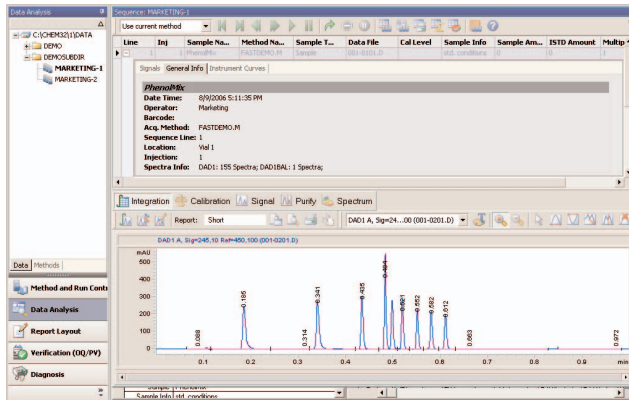




Browsing buttons provide fast data review and reprocessing. Left: sequence line stepping buttons. Center: reprocess, stop, pause. Right: edit sequence buttons.

Improved navigation through browsing buttons

Data review and analysis can be automated by using the stepping and reprocessing buttons. During sequence reprocessing, sequence data can be reanalyzed based on changes in the sequence table, for example, when dilution factors or multipliers are edited.

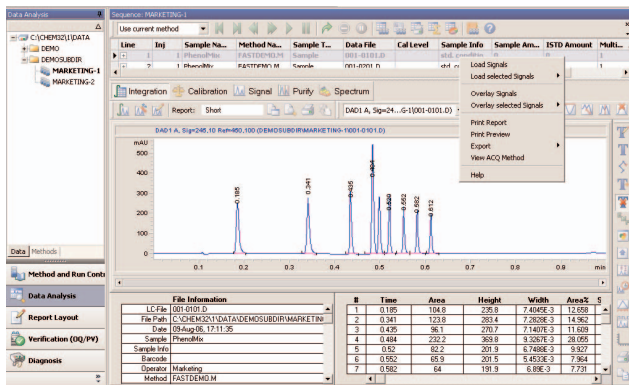


See all run information and the corresponding chromatogram in one view.

Improved data review and reprocessing capabilities using the Navigation Table

The Navigation Table in the Data Analysis view allows users to see all runs of a sequence in one window. It makes use of right mouse-click actions, provides additional run details and offers table-specific features, such as sorting and more. Multiple clicks are a convenient way to overlay and compare runs and results.

The Navigation Table has two prominent features – fast data review and sequence reprocessing. In data review, a simple click on a table row loads the respective chromatogram. This allows users to reanalyze the run and apply run-specific changes to the individual method DA.M.



Context-sensitive functions in the Navigation Table let you execute essential data analysis tasks quickly – you can overlay signals, view the acquisition method, and export data directly.

Integration in Agilent OL ECM

Recognizing that centralized and secure recordkeeping is essential for modern laboratories, Agilent ChemStation data is integrated in Agilent OL ECM and thereby stores methods, results and data in a secure location. The data is protected from unauthorized access on the central data server where it is maintained for long-term storage and indexed for accurate and ready retrieval throughout the record-retention period.

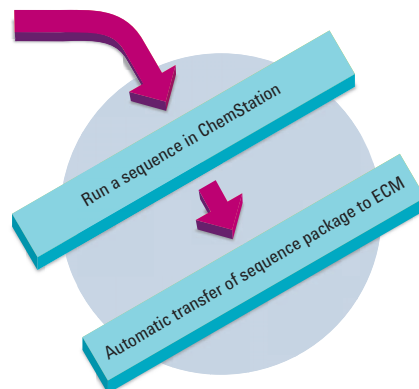
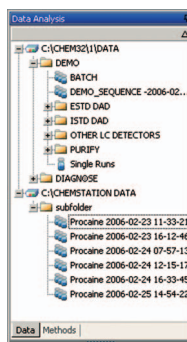
The latest revision of Agilent ChemStation marks an important milestone in achieving tight integration with Agilent's new laboratory informatics framework – Agilent OL operating system for the laboratory. Agilent ChemStation is now seamlessly integrated in Agilent OL ECM. Data, methods and results can be stored and loaded centrally from a secure server location. By implementing Agilent OL ECM in an organization, data can be acquired and organized across laboratories and departments.

All documentation and data are saved in a single repository and can be organized and retrieved using advanced algorithms. Agilent OL ECM enables several people to review a single chromatogram, rapidly and easily, without launching the original application. With Agilent OL ECM, Agilent facilitates data organization and administration beyond a single laboratory, providing an integrated solution for an entire facility.

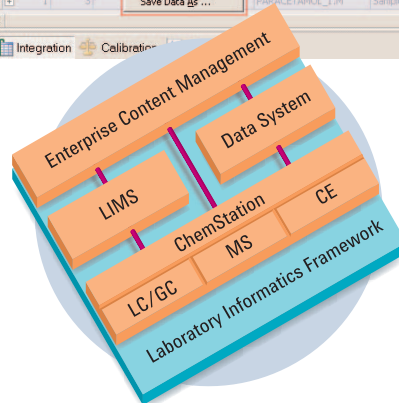
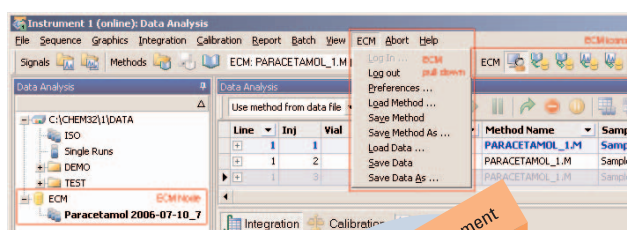
Specifications

Supported instruments	Agilent LC, GC, LC/MS, CE
PC requirements	Windows XP SP2, Pentium V, 1.5 GHz, SXGA display (1280x1024 resolution), 40 GB hard disk, 512 MB RAM
Supported add-on software	GPC, ChemStore (rev. B.03.03. SR 1), Agilent OL ECM desktop integration (rev. 3.3.1). Note: Not compatible with ChemStore

For full details, see Agilent ChemStation B.03.01 specifications, Agilent publication number 5989-6655EN



Workflow of sequence acquisition and automatic transfer of data in Agilent OL ECM



Integration of Agilent ChemStation with Agilent OL ECM.

www.agilent.com/chem/labinformatics

© Copyright 2007 Agilent Technologies
Published April 1, 2007
Publication Number 5989-6505EN



Agilent Technologies