

SERVO CNC for Windows XP® Professional NOW AVAILABLE FROM SERVOSOURCE

Servo II® CNC software now operates under
Microsoft Windows XP® Professional.

Based on the standard Windows® graphical user interface, the new Servo II® CNC software has features that provide ease of use, multitasking and the networking capability of Windows XP® Professional. A real-time extension, RTX™ from VenturCom, allows the PC-based control to operate with a single processor. A single motherboard with no extra cards to install simplifies the system and increases reliability and up time.

Features include the ability to run programs of any length including those with subroutines or "P-cycles" (limited only by the size of your hard drive). You can also create new programs or edit existing programs in the Verify module, while running or editing a program in the CNC module. The program editor includes powerful tools that reduce programming time, such as Find and Replace, Cut, Copy, Paste, Undo, Redo, and Bookmark. The Graphic mode verification includes Single Step and Search with Center, Fit, Zoom, Pan and Plane features to see the toolpath, as you want to see it. Browser-based on-line help and documentation provide an easy reference for the novice or experienced operator.

User-selectable display options during CNC-Run or Verify include Program Sequence for real-time viewing of the G Code program, real-time toolpath display in Graphics mode, DRO mode, CNC modal commands status, position and limits status, part counter and cycle timer. The CNC module can run minimized using the RUN and STOP controls on the handheld pendant.

Servo CNC for Windows XP® Professional is available as an upgrade option with Servo II Retrofit Control Systems and Impact CNC Mini-Mills. In addition, a convenient upgrade path allows you to update earlier Servo CNC for DOS systems. All the previous G and M codes are compatible with the new software, so programs run without any editing or translation. Contact ServoSource Technical Support for the PC configuration required to run the Servo CNC for Windows XP® Professional. (Note: You may also have to update the motor ROMs.)

"Ask about the Servo II Pendant with Manual Pulse Generator."



For more information contact:

SERVOSOURCE

174 W. Pomona Ave., Monrovia, CA 91016 USA

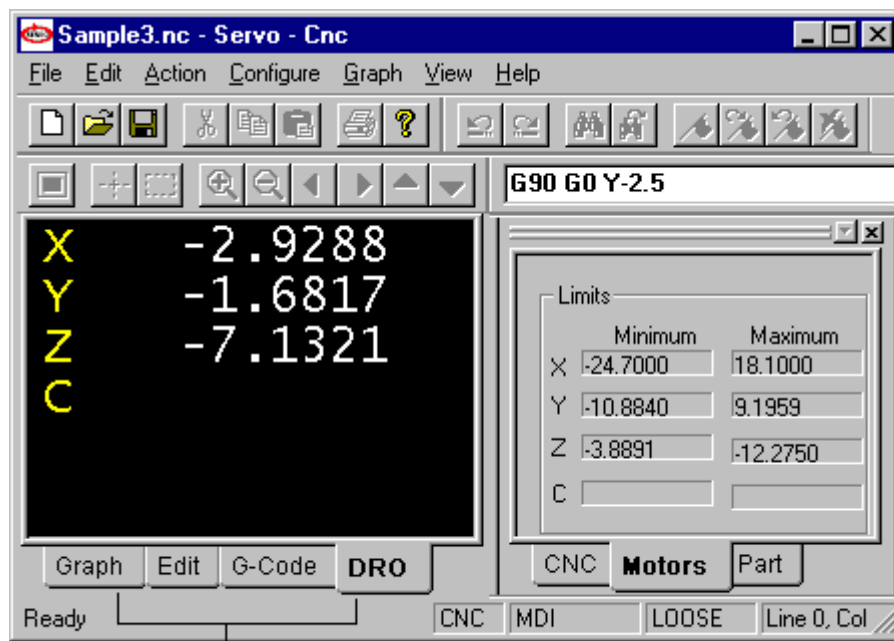
Phone: 626.301.0323, Fax: 626.301.0324

Web: www.servosource.com

Email: servosource@hotmail.com

Sample Screens: SERVO CNC for Windows® XP Professional

Update!



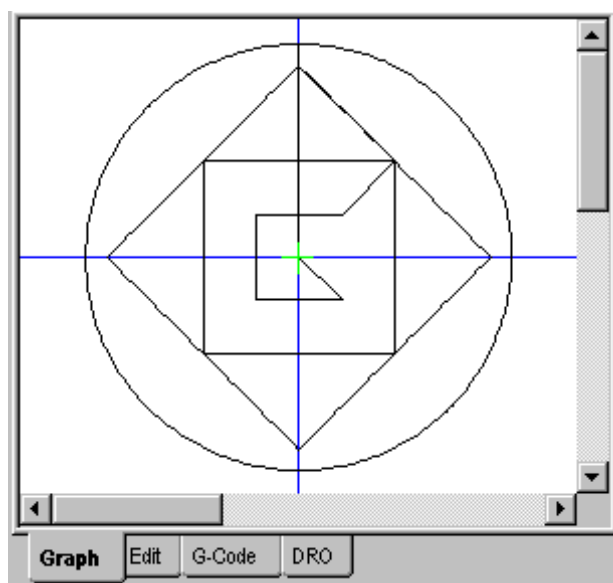
Title bar
Menu bar
Tool bars

CNC Status bar with tabs

Status bar

View tabs

Graph View Tab



CNC Status Tab

Sequence # 9

Tool# 11 Dia 0.1250

Coolant On BlkDel Off

CutComp Off In-Position

Absolute Inch

Spindle Fwd 0 RPM

Feed

F 7.72 E 2.06 D 103.00 Knob 103

Status

X ACTIVE Y ACTIVE Z ACTIVE C ACTIVE

Position

X 0.4971 Y 0.0540 Z -0.0500 C 0.00

CNC Motors Part

Cycle Time: 00:00:00

Part Count: 0

Position Traveled

	Minimum	Maximum
X	-0.6601	-0.6601
Y	0.5910	0.5910
Z	0.0000	0.0000
C		

CNC Motors Part

